

## AXIS Camera Station

Optimized for easy and efficient surveillance



- > Optimized for Axis network video products
- > Quick system setup
- > Intuitive operation
- > Effective investigation
- > High-definition identification

AXIS Camera Station is a monitoring and recording system for small- to mid-sized installations. Optimized for Axis network video products, this software offers easy installation and setup and an intuitive user interface for effective investigation and high-definition identification.

AXIS Camera Station meets the needs for efficient surveillance of small- to mid-sized installations, such as retail shops, hotels, schools and manufacturing sites. It is a proven solution designed to perfectly match Axis' wide range of HDTV network video products and product features.

The software client can be installed on any computer, enabling remote viewing and control from anywhere on the corporate network or the Internet.

An easy setup wizard with automatic camera discovery guides you through all the necessary steps of the configuration process. This allows the system to be up and running within minutes.

An intuitive user interface with flexible live-view layout, site maps, powerful event configuration, efficient alarm management and responsive PTZ control makes it possible to effectively manage the cameras in the system.

Quick investigation and retrieval of evidence for safe and secure export is enabled by intuitive timeline visualization and an efficient video search. By defining an area of interest you can quickly search through vast amounts of high definition recordings.

H.264 compression and advanced camera-based video motion detection enables high-definition video for identification even if bandwidth and storage is limited.

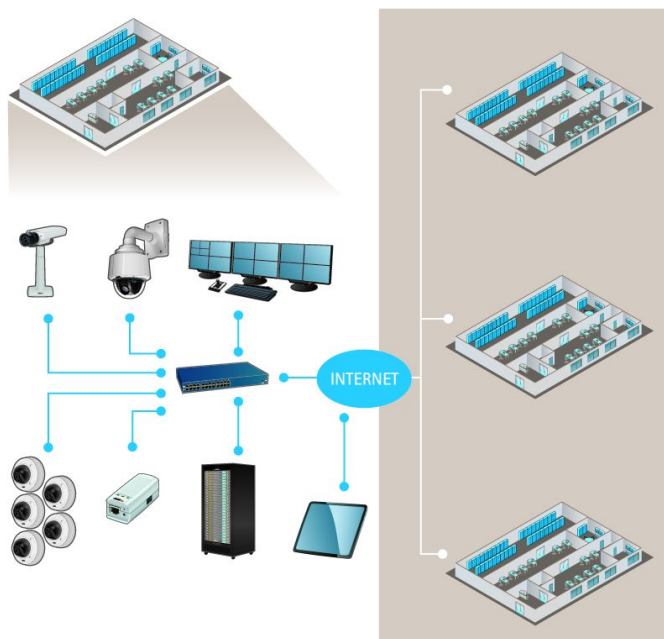


# Technical Specifications – AXIS Camera Station

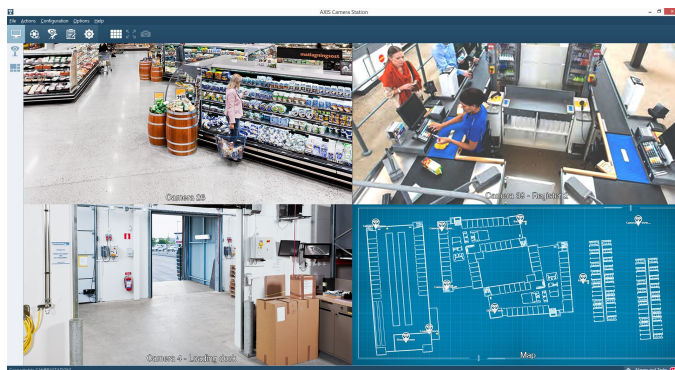
General	
<b>Languages</b>	English, Arabic, Brazilian Portuguese, Dutch, Finnish, French, German, Italian, Japanese, Korean, Persian, Polish, Russian, Simplified Chinese, Traditional Chinese, Spanish, Swedish, Turkish, Vietnamese
<b>Licenses</b>	Base license for 4 or 10 cameras, Additional licenses in increments of +1, +5 or +20 up to 100 cameras One year support license included in initial base license Future support and upgrade require yearly support license 30-day unlimited trial can be upgraded to licensed version
<b>Number of channels</b>	Up to 100 cameras, per server
<b>Compatible products</b>	Axis network cameras and encoders including HD, standard resolution, high resolution, Pan Tilt Zoom and thermal cameras with firmware 4.30 or later
<b>Included accessories</b>	Installation Guide CD with software and User manual
<b>System accessories</b>	AXIS T8310 Video Surveillance Control Board, AXIS P8821 I/O Audio Module, AXIS A1001 Network Door Controller
Video	
<b>Audio</b>	One-way audio streaming, AAC, G.711, G726 compression
<b>Video compression</b>	H.264 (MPEG-4 Part 10/AVC), Motion JPEG
<b>Resolutions</b>	Supports all camera resolutions
<b>Frame rates</b>	Up to 60 images per second per camera
Storage	
<b>Storage Media</b>	Use local hard drives or high performance NAS for storage Up to 10 cameras (HDTV 1080p) per hard drive
<b>Storage capacity</b>	Unlimited recording database, limited only by disk space Duration can be limited per camera to conform to local legal requirement
Live view	
<b>Camera live view</b>	Flexible live view configuration, Axis' Corridor Format, Multiple monitors, Hot-spot, Camera/view sequence, Site maps, Web page, Digital PTZ, Image enhancement
<b>PTZ</b>	Control of PTZ and dome cameras using mouse or joystick, Area zoom, Programmable hot-keys

Playback	
<b>Search for recordings</b>	Search for recordings based on camera, Date and time Timeline visualization, Smart search, Bookmarks, Locking of prioritized recordings
<b>Playback</b>	Playback speed: up to 64x or frame by frame Up to 25 cameras synchronized playback
<b>Export</b>	Manual and scheduled export Single images in JPEG format, Video in ASF format Digital signature on exported recordings, Standalone player
Triggers & events	
<b>Event triggers</b>	Events triggered by video motion detection, Active Tampering Alarm, AXIS Cross Line Detection, External I/O, Action button, System triggers and device event triggers
<b>Scheduled recording</b>	Schedule per camera for continuous recording or customization of weekday and weekend recordings
<b>Alarm actions</b>	Record, Visual notification, Audible alert, Switch to camera/view Go to PTZ preset, Email, Alarm procedure, External I/O acknowledgement of alarms, HTTP notification
<b>Logs</b>	Alarm, Event and audit logs
System	
<b>System recommendations</b>	OS: Windows 8 Pro 64-bit CPU: Intel Core i7 RAM: 8 GB Graphics card: 1 GB onboard video memory with mult-screen support (client) Hard drives: SATA 6 Gb/s 7200 RPM Enterprise Class (server) Network: 1 Gbps Uninterruptible Power Supply (UPS)
<b>Mobile access</b>	Apps for Android devices, iPhone and iPad (Available from third-party vendor)
<b>Security</b>	Multiple user access levels with password protection using local or Windows domain users (Active directory) Failover recording in cameras with SD card

## System setup example



## Live view example



## Playback example

